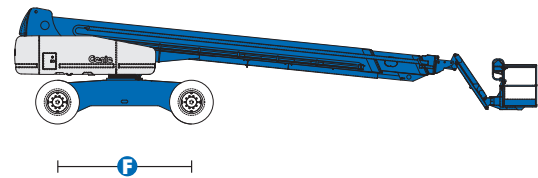
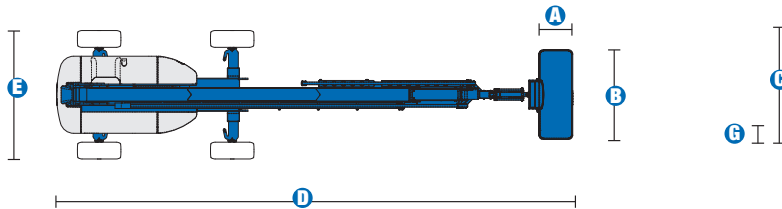


Specifications



MODEL	S™-125	
MEASUREMENTS	Metric	US
Working height maximum*	40.15 m	131 ft 2 in
Platform height maximum	38.15 m	125 ft 2 in
Horizontal reach maximum	24.38 m	80 ft
Below ground reach	3.27 m	10 ft 9 in
A Platform length	0.91 m	3 ft
B Platform width	2.44 m	8 ft
C Height - stowed	3.07 m	10 ft 1 in
D Length - stowed	14.25 m	46 ft 9 in
Length - transport (jib tucked under)	12.17 m	39 ft 11 in
E Width - axles retracted	2.49 m	8 ft 2 in
Width - axles extended	3.35 m	11 ft
F Wheelbase	3.66 m	12 ft
G Ground clearance - centre	0.44 m	1 ft 5.5 in

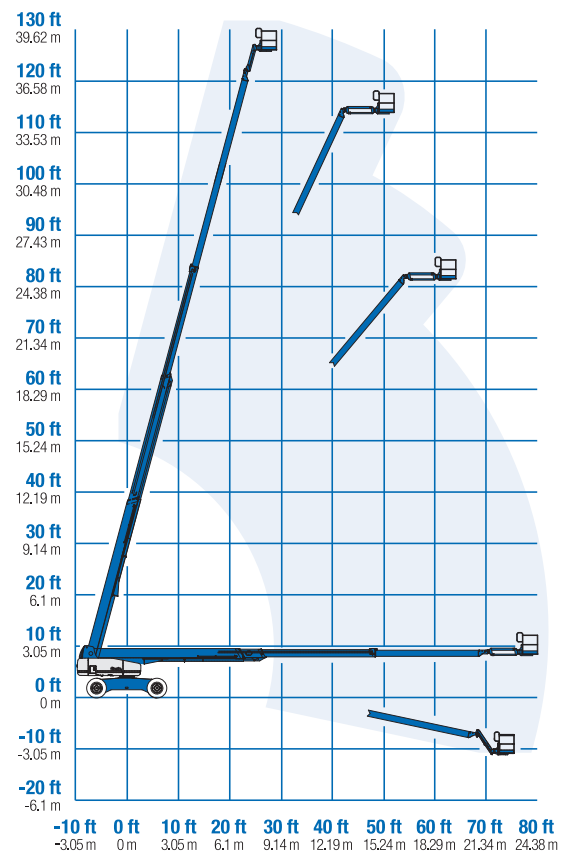
PRODUCTIVITY		
Lift capacity	227 kg	500 lbs
Platform rotation	160°	160°
Vertical jib rotation	135°	135°
Turntable rotation	360° continuous	
Turntable tailswing - axle retracted	1.68 m	5 ft 6 in
Turntable tailswing - axle extended	1.24 m	4 ft 1 in
Drive speed - stowed	4.8 km/h	3.0 mph
Drive speed - raised/extended below 80 ft	1.1 km/h	0.68 mph
Drive speed - raised/extended above 80 ft	0.55 km/h	0.34 mph
Gradeability - stowed**	40%	40%
Turning radius - axle retracted: inside	4.01 m	13 ft 2 in
outside	6.75 m	22 ft 2 in
Turning radius - axle extended: inside	2.59 m	8 ft 6 in
outside	5.74 m	18 ft 10 in
Controls	12V DC proportional	
Tyres - RT lug - Foam filled	445/65 D22.5	

POWER		
Power source	Deutz TD 2011 L04i 4-cylinder turbo diesel 55 kW (74 hp)	
Auxiliary power unit	12V DC	12V DC
Hydraulic tank capacity	208 L	55 gal
Fuel tank capacity	151 L	40 gal

WEIGHT***		
	20,739 kg	45,721 lbs

STANDARDS COMPLIANCE	ANSI A92.5, CSA B354.4, CE Compliance, AS 1418.10
----------------------	---

RANGE OF MOTION S™-125



* The metric equivalent of working height adds 2 m to platform height. U.S. adds 6 ft to platform height.
 ** Gradeability applies to driving on slopes. See operator's manual for details regarding slope ratings.
 *** Weight will vary depending on options and/or country standards.

Features

STANDARD FEATURES

MEASUREMENTS

- S™-125**
- 40.15 m (131 ft 2 in) working height
 - 24.38 m (80 ft) horizontal reach
 - 227 kg (500 lbs) lift capacity

PRODUCTIVITY

- 2.44 m (8 ft) steel platform
- 1.52 m (5 ft) jib boom with 135° working range
- 4WD
- 4WS
- Extendable axles
- Rough terrain foam-filled tyres
- Self-leveling platform
- Hydraulic platform rotation
- Fully proportional Hall effect joystick controls
- Hydraulic oil cooler
- Drive enable
- Horn
- Hour meter
- Tilt alarm
- Descent alarm
- Motion alarm
- 360° continuous turntable rotation
- Locking turntable covers
- Positive traction drive
- Two speed wheel motors
- Configurable controls to limit maximum height to 24.38 m (80 ft) or 30.48 m (100 ft)
- Ground control box cover
- Engine status display
- Thumb rocker steer
- Dual flashing beacons

POWER

- 12 V DC auxiliary power
- Deutz turbo diesel 55 kW (74 hp)
- Anti-restart engine protection
- Auto engine fault shutdown

OPTIONS & ACCESSORIES

PRODUCTIVITY

- Platform swing gate
- Half mesh platform inserts with swing gate
- Platform top auxiliary rail
- Air line to platform
- Fire resistant hydraulic oil
- Biodegradable hydraulic oil
- Basic hostile environment kit
- Deluxe hostile environment kit
- Deluxe aircraft protection package (6 ft platform only)
- Tool tray
- Fluorescent tube caddy
- Platform work lights
- Front driving lights
- Lockable platform control box covers
- 1.83 m (6 ft) steel platform

POWER OPTIONS

- 240 V power to platform
- 7 kVA hydraulic generator (240 V/50 Hz)
- Cold Weather Packages
- Diesel scrubber/spark arrestor muffler
- Retained key selector switch



Genie Australia – Toll free number 1800 788 633

Brisbane (Head Office)
33 Kimberley Street
Darra QLD 4076

Sydney
74 Glendenning Road
Glendenning NSW 2761

Melbourne
374 Hammond Road
Dandenong VIC 3175

Perth
83 Bannister Road
Canning Vale WA 6155

Genie United States

Distributed by:

18340 NE 76th Street
P.O. Box 97030
Redmond, Washington
98073-9730